

REAL DEALS

JAN FEB MAR 2020

ISUZU
RELIABILITY IS EVERYTHING

Headlight Protectors

Guard against stone damage to your headlights with a set of Isuzu Headlight Protectors. Excellent durability with simple clip on fitment.

All NH models, FH FRR, FRD, FSR, FSD

\$140

FH FTR, FV*, all FX and FY models

\$180



Weather Shields

Practical and stylish solution for open window driving.

L/H Weathershield	All N, F, FX* & FY* models 2008 - Onwards	\$130
R/H Weathershield	All N, F, FX & FY models 2008 - Onwards	\$130
R/H Slim Weathershield	CX* / EX* models 2008 - Onwards	\$130
L/H Full Weathershield	CX* / EX* models 2008 - Onwards	\$150
R/H Full Weathershield	CX* / EX* models 2008 - Onwards	\$150

Meritor Brake Chambers

R872430C - 2430 BRAKE CHAMBER

\$115

R873030C - 3030 BRAKE SPRING UNIT

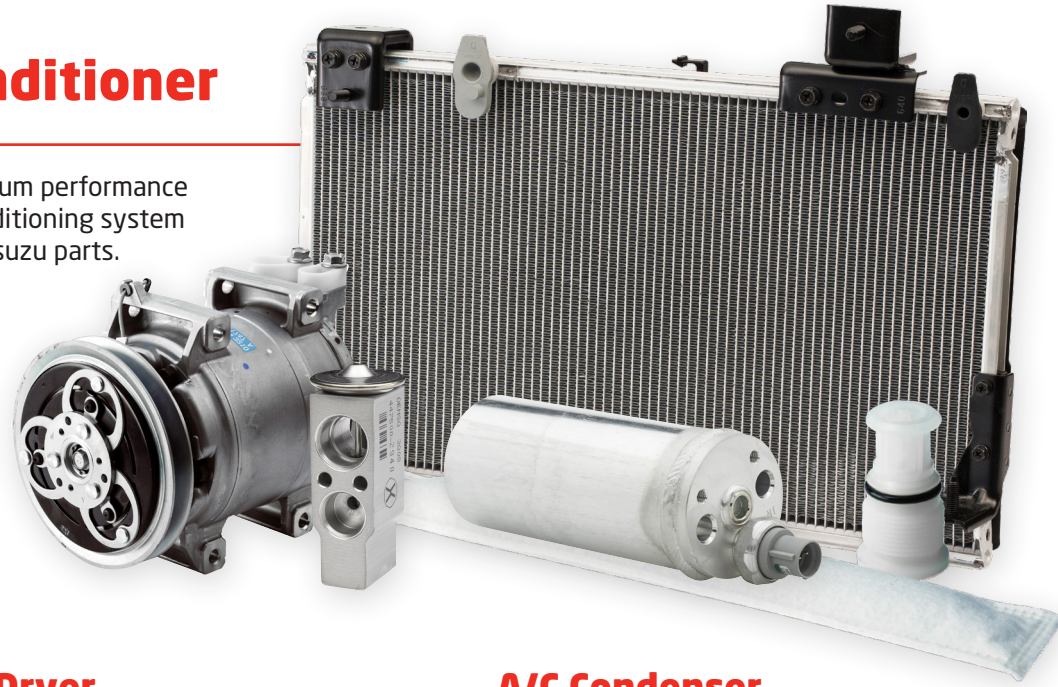
\$115



*Applies to all models in range.

Air Conditioner Parts

Maintain optimum performance of your air conditioning system with genuine Isuzu parts.



Receiver Dryer

NP*/NQ*/FR*/FS*/FT*/FV*/FX*/FY*/CX*/CY* 10/07 - 09/14	\$150
NP*/NQ*/FR*/FS*/FT*/FV*/FX*/FY*/CX*/CY* 10/14 - Onwards	\$210

TX Valves

NL*/NP*/NQ*/FR*/FS*/FT*/FV*/FX*/FY* 10/07 - Onwards	\$140
CX*/CY*/EX* 10/07 - Onwards	\$230

Evaporator

NL*/NP*/NQ*/FR*/FS*/FT*/FV*/FX*/FY* 10/07 - Onwards	\$510
CX*/CY*/EX* 10/07 - Onwards	\$805

Thermostats

82°C - 4HK1 engines 2008 - Onwards	\$38
85°C - 4HK1 engines 2008 - Onwards	\$46
4HG1 engines 1999-2003	\$42
6HK1 engines 1996-2000	\$110
6HK1 engines 2008 - Onwards	\$70
6SD1 engines 1996-2006	\$66

A/C Condenser

NLR/NLS 10/07 - 08/10	\$780
NN*/NP*/NQ* 10/07 - Onwards	\$840
NLR/NLS 09/10 - Onwards	\$900
CX*/CY*/EX* 10/07 - Onwards	\$1,150
FR*/FS*/FT*/FV* 10/07 - Onwards	\$1,380
FX* 10/07 - 04/12	
FX* 05/12 - Onwards,	\$1,495
FY* 12/12 - Onwards	

A/C Compressors

NL*/NN* 4JJ1 07/10 - 05/15	\$1,800
NP*/NQ* 07/10 - 05/15	\$1,800
FRR/FSR/FSD/FTR/FTS/FV* 6HK1 10/07 - Onwards, FX*/FY* 10/07 - Onwards	\$2,200
CX*/CY*/EX* 10/07 - Onwards	\$2,900



Radiators

Excellent coolant flow allowing for better heat dispersion and more consistent temperatures, ensuring your cooling system performs as intended.



NNR / NPR / NQR, 09/10 Onwards with Manual Transmission	\$2,054
FVD / FVL / FVM / FVR / FVY / FVZ / GVD / GVR, 04/03 - 09/07	\$2,108
NPR / NQR with 4HK1 Engine and Manual Transmission, 10/07 - 08/10	\$2,108
NPS 10/07 - 08/10	\$2,128
NNR / NPR / NQR with 4HK1 Engine and AMT, 10/07 - 08/10	\$2,150
FRR / FSR / FSS / FTR / FTS, 04/96 - 04/00	\$3,214

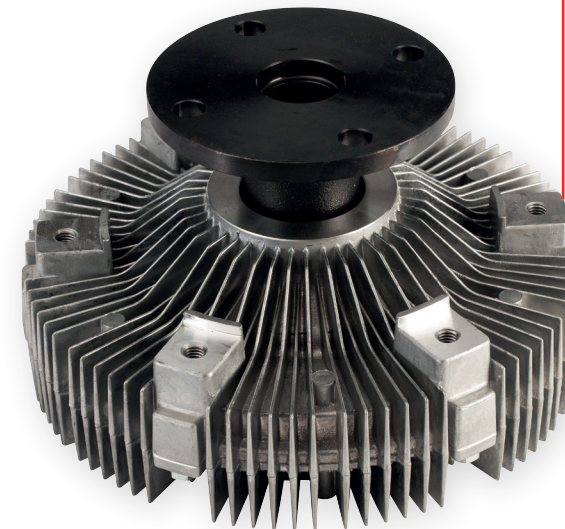
Top Radiator Hose

4HK1 NP*/NQ* 2008 - Onwards	\$24
4HK1 FRR 2008 - Onwards	\$27
4JJ1 NL*/NN* 2008 - Onwards	\$28
6HK1 FR*/FS* 2008 - Onwards	\$97

Bottom Radiator Hose

4HK1 NP*/NQ* 2008 - Onwards	\$38
4JJ1 NL*/NN* 2008 - Onwards	\$57
4HK1 FRR 2008 - Onwards	\$109
6HK1 FR*/FS* 2008 - Onwards	\$110

Fan Couplings



NPR / NPS / NQR / FRR 4HK1 10/07 - 05/16	\$276
NLR / NLS / NNR 4JJ1 10/07 - current	\$414
FRR / FSR / FT* / FV* / GV* 6HK1 10/07 - current	\$690
FX* / GX* / FY 01/08 - current	\$2,110

BVP Brake Shoes

The BVP brake shoe range consists of bonded linings on disposable shoes. The use of bonded linings significantly reduces cost and saves on down time compared with riveted linings.

Brake Shoe Set (Front)

NKR 1994 - Onwards	\$146
NPR / NPS 1994 - Onwards	\$169
FRR 1996 - 1998 - excludes rear wheel air park brake	\$172
FRR 1996 - 1998 - with rear wheel air park brake	\$172
FRR 1998 - Onwards - excludes rear wheel air park brake	\$172
FRR 1998 - Onwards - with rear wheel air park brake	\$172
FSR / FSS / FTS 1996 - Onwards	\$200
FRR 1996 - Onwards - excludes rear wheel air park brake	\$200



Brake Shoe Set (Rear)

NKR 1994 - Onwards	\$130
NPR / NPS 1994 Onwards GVW 5.5-6.0 Ton GVW 6.5-7.0 Ton	\$180
NPR 1994 Onwards GVW 7.5-8.0 Ton	\$207
FSR / FSS / FTS 1996 - Onwards	\$215
FRR 1996 - Onwards with rear wheel air park brake	\$220

BVP Water Pumps

BVP water pumps are manufactured to meet Isuzu's high quality and design standards, ensuring the optimum coolant flow within the engine cooling system.

NKR 2003 - 2006	\$175
NPR / NPS / NQR 2005 - 2007	\$184



BVP Brake Pads

Durable, reliable and at a great price.

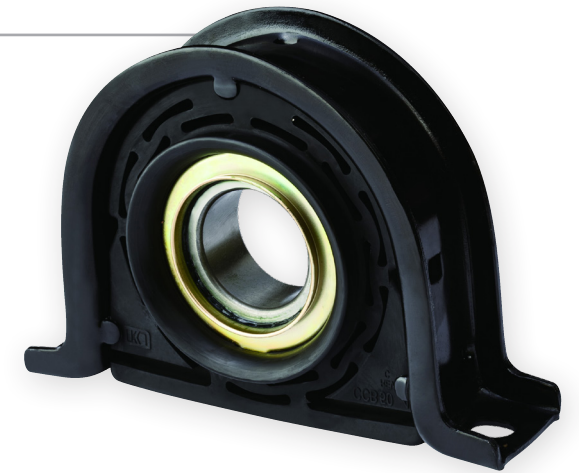
NPR 200/ 250/ 275/ 300 (excluding auto) 99 - Onwards	\$190
NPR250 crew 05 - Onwards	\$190
NPR 250/ 300 auto 94-98	\$190
NQR 05 - Onwards	\$190



Meritor Centre Bearings

Ideal for most popular heavy-duty trucks. Rubber cushion pivots in the bracket, allowing +/- 5 degrees of driveline angularity. Reduced risk of premature bearing wear due to misalignment. Unique design protects the bearing against contamination without the use of external deflectors. Backward compatible with previous Meritor and current competitive designs.

CB2101211XSA	17N Centre Bearing Slotted cushion type	\$105
CB2106611XSA	18N Centre bearing Slotted cushion type	\$144



Meritor King Pin Kits

A choice of Meritor's Bronze or Ezi-steer low friction bushes can reduce steering effort and ensure longer service life. Large diameter king pins further extend service life and provide excellent durability. King pin seal prevents leakage and provides improved lubrication.

MERITOR EZI-STEER KING PIN KIT	MFS73 FRONT AXLE	\$550
	FG941 FRONT AXLE	\$500
MERITOR BRONZE KING PIN KIT	MFS73 FRONT AXLE	\$575
	FG941 FRONT AXLE	\$460

Meritor Universal Joints

Designed for both on and off highway applications. Triple lip sealing system keeps grease in and dirt out. Superior bearing package includes an innovative needle retention design to ensure correct assembly.

Full Round	16N Series Driveline	\$145
	17N Series Driveline	\$150
	18N Series Driveline	\$167
Easy Service (Half Round)	16N Series Driveline	\$174
	17N Series Driveline	\$160
	18N Series Driveline	\$188



Genuine Isuzu Accessories can increase overall functionality, boost vehicle performance, and increase resale value.

Floormats.

Durable tailored heavy duty rubber floor mats protect the original carpet in your vehicle from dirt, grime and everyday wear and tear. Top quality, high grade rubber makes it easy to clean and maintain. Also available in carpet. Please contact your Isuzu Dealer for further details.

FX* 2008 - Onwards, FY* 2013 - Onwards	\$80
FR*/FS* 2008 - Onwards	\$90
FT*/FV* 2008 - Onwards	\$100
NLR/NLS 2008 - Onwards	\$100
NNR/NPR/NQR 2008 - Onwards	\$100
CX*/CY*/EX* 2003 - Onwards	\$125



Isuzu Mirrors.



8 1/2" SPOTTER MIRROR KIT
Includes Spotter Mirror & Arm

\$150



UNIVERSAL MIRROR HEAD
Flat Glass • 415 x 225mm
16-28mm Clamp • Suits Hino F Series & Isuzu F Series up to 2006

\$105



UNIVERSAL MIRROR HEAD
Flat Glass • 440 x 200mm
16-25mm Clamp

\$108



2 PIECE MIRROR HEAD
With adjustable mirror
440 x 200mm
Available in LH and RH.

\$127



UNIVERSAL MIRROR HEAD
Rectangular/ Convex
280 x 170mm • 16-22mm Clamp

\$82



24V MIRROR HEAD
Suits Volvo FL, FE & FM
excluded Series 1 (Electric & Heated)
480 x 214mm • 16-28mm Clamp

\$575



OEM MIRROR
Suits Volvo FH/FM 06/2002-11/2013
Electric & Heated • 670 x 260mm
Available in LH and RH.

\$460



OEM MIRROR
Suits Scania • 4/R/P/T 2004 - Onwards
Electric & Heated • 650 x 290mm
Available in LH and RH

\$750

Full range of mirrors available. Please contact your local dealer for more info.

Beat the heat this Summer with our cool range of merchandise

ISUZU STUBBY HOLDERS

Keep your can or bottle chilled with these premium quality stubby skins from Isuzu.



\$8



\$14

2 LITRE WATER JUG

BPA/DEHP free



\$47

BEACH CRICKET SET

Includes a size 5 wooden cricket bat, a ball and four stumps.



\$95

ISUZU MEN'S VERVE NAVY POLO

Available in size XS, S, M, L, XL, 2XL, 3XL, 4XL and 5XL.



\$38

TORCH & TOOL SET

This 9 function multi-tool and torch keyring set is perfect to keep handy for everyday use.



\$53

CALLAWAY CORPORATE HEAD COVER

Stylish neoprene head cover by Callaway includes a zip top section for tee storage.



\$98

3 BALL MINI GOLF SET

Contains 3 golf balls, 4 wooden tees, 2 plastic ball markers and 1 metal pitch repainer.



\$50

BOSS UMBRELLA GREY CHECK

Stylish 6 panel curved deep fit cap with curved peak and velcro adjustment at the back.



\$85

ISUZU TRUCKS BADGE CAP

Cotton twill with red pipping and layered reflective peak.



\$25

ISUZU TRUCKS HEAVY BRUSHED CAP

Stylish 6 panel curved deep fit cap with curved peak and velcro adjustment at the back.



\$25

ISUZU BLACK OTTOMAN CAP

Textured, stretchable fabric with curved peak and velcro adjustment at the back.



\$21

ISUZU TRUCKS DELUXE COOLER BAG

Quick access velcro top. Holds 12 cans.



\$73

ISUZU TRUCKS SPORTS BAG

This tough sports bag features a large main compartment with easy-access top zip, along with additional end and front pockets.



\$100

Real Dealers

Isuzu Truck Dealer (North Island)

CAL Isuzu (Auckland)	59 Lady Ruby Drive, East Tamaki, Auckland, 2013	09 9181940	www.calisuzu.co.nz
CAL Isuzu (Tauranga)	138 Totara Street, Mt Maunganui, 3116	07 9284399	www.calisuzu.co.nz
CAL Isuzu (Hamilton)	State Highway 1, Te Rapa, 3200	07 8475110	www.calisuzu.co.nz
Shorland Isuzu	79 Old Taupo Road, Rotorua, 3010	07 3483179	www.shorlandisuzu.co.nz
Deakin Trucks	14 Chatham Road, Hastings, 4175	06 8721040	www.deakintrucks.co.nz
McCurdy Trucks (Hawera)	250 Waihi Road, Hawera, 4610	06 2787166	www.mccurdy.co.nz
McCurdy Trucks (New Plymouth)	72 Connett Road, Bell Block, New Plymouth	06 7698032	www.mccurdy.co.nz
Robertson Isuzu	56 Railway Avenue, Palmerston North, 4414	06 3555062	www.robertsonisuzu.co.nz
Cable Price	41-51 Bell Road South, Gracefield, 5010	04 5684289	www.cableprice.co.nz

Isuzu Truck Dealer (South Island)

Wadco Trucks	3 Horton Street, Blenheim, 7201	03 5792975	www.wadscotrucks.co.nz
Smallbone Commercial	122 Archibald Street, Ashburton, 7700	03 3079270	www.smallbones.co.nz
Blackwells	9 Waterloo Road, Sockburn, Christchurch, 8042	03 3445733	www.blackwellsisuzu.co.nz
Smallbone Isuzu (Timaru)	84 Hilton Highway, Timaru, 7910	03 6839073	www.smallbones.co.nz
Cooke Howlison	52 Tevoit Street, Dunedin, 9012	03 4664944	www.cookehowlison.co.nz

Authorised Parts & Service Centre (North Island)

Commercial Diesel Ltd	40 Gumdigger Place, Whangarei, 0110	09 4386915
Commercial Diesel Services 2003 Ltd	2 Gumfield Drive, Warkworth, 910	09 4258456
CAL Isuzu Wiri	8 Edsel Way, Manukau City, 2104	09 2622978
Transport Diesel & Marine	8 Prescott Street, Penrose, 1061	09 5253856
Cameron Mechanical	129 Aerodrome Road, Gisborne, 4071	06 8679999
Truck Tech Solutions Ltd	7B Furnace Place, Silverdale, 0932	09 9063099
Taupo Diesel Solutions	42 Matai Street, Taupo, 3378	07 3774324
Taumarunui Auto Centre	121 Bell Road, Taumarunui, 3920	07 8957493
Emmetts Truck Services	357 Heads Road, Wanganui, 4501	06 3445055
Emerald Truck Services	81 Judds Road, Masterton, 5810	0800 111 120

Authorised Parts & Service Centre (South Island)

Thwaites Diesel Ltd	Unit 9 - 74 Quarantine Park, Stoke, Nelson, 7011	03 5471400
Cable Price Greymouth	65 Preston Road, Blaketown, Greymouth, 7805	03 7699005
Queenstown Commercial Services Ltd	131 Gorge Road, Queenstown, 9300	03 4428203
Cable Price (Invercargill)	203 Clyde Street, Invercargill, 9810	03 2144439

Our Transport Industry Partners



VISIT ISUZU.CO.NZ/FIND-A-DEALER FOR YOUR CLOSEST DEALERSHIP

Prices published are recommended selling prices, include GST and are effective 1st January 2020 until 31st March 2020 or while stocks last. Images are for illustrative purposes only. All parts advertised herein have been included in good faith and on the basis that those parts will be available at participating Isuzu Dealerships at the time of publication. Isuzu and participating Dealers reserve the right to correct any errors made in parts listed and/or the pricing published.